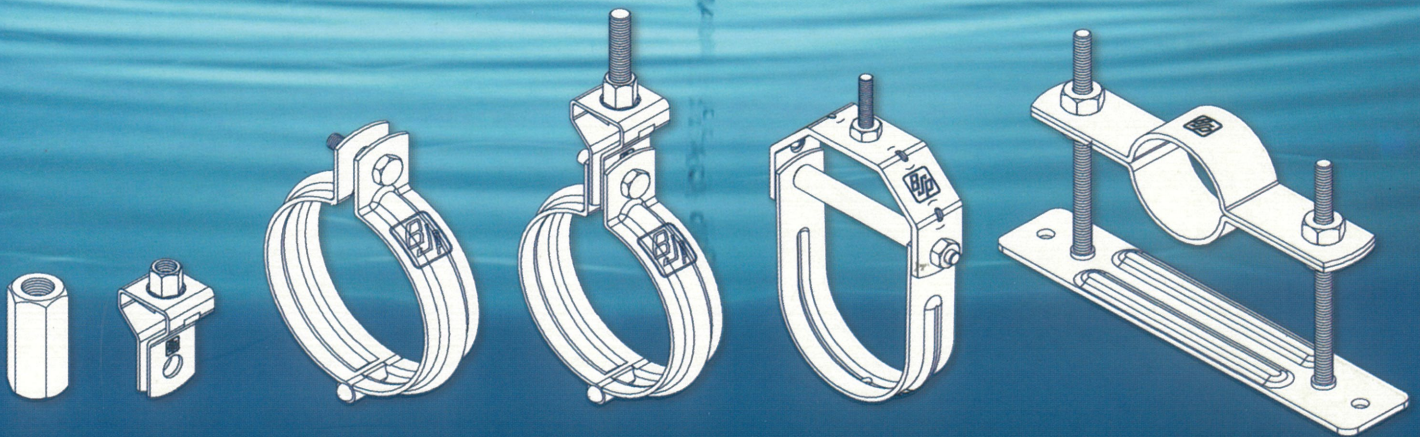
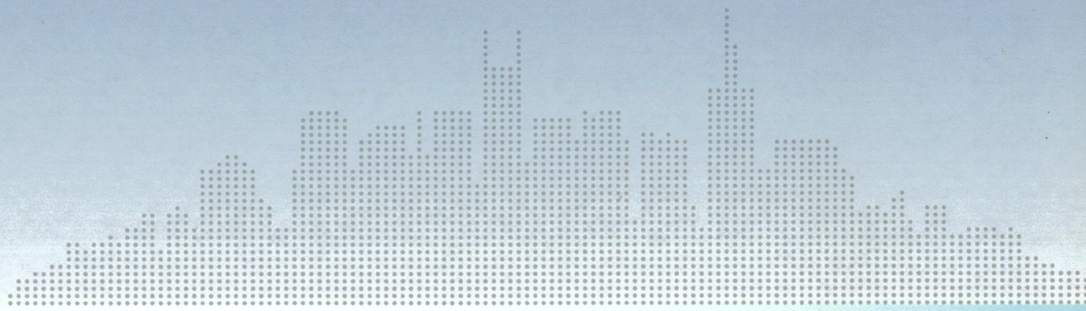




B.S.P. PRODUCTS CO., LTD.

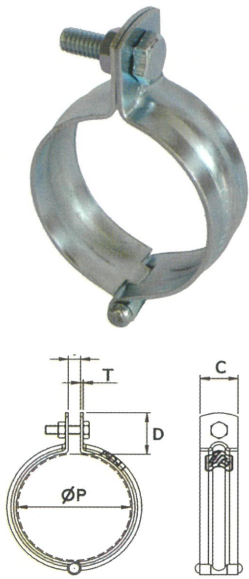
# PIPE HANGERS & SUPPORTS





# SR-1

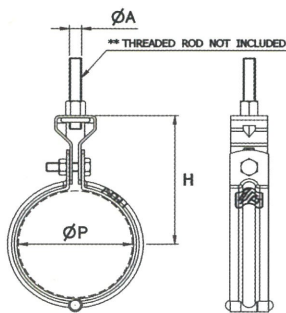
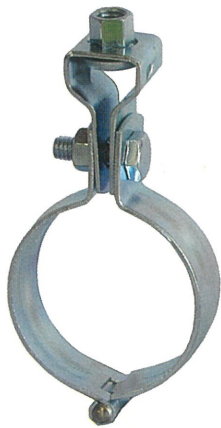
## SPLIT RING HANGER



Pipe size (mm.)	Pipe size (inch.)	Pipe OD (mm.)	Bolt size (inch./l)	T (mm.)	C (mm.)	D (mm.)	F (mm.)	Brkng Ld/kgs	Recom. span
15	1/2	21.7	1/4" x 25	1.8	25	28	8	500	1.8 M.
20	3/4	27.2	1/4" x 25	1.8	25	28	8	500	1.8 M.
25	1	34.0	1/4" x 25	1.8	25	28	8	500	1.8 M.
32	1 1/4	42.7	1/4" x 25	1.8	25	28	8	500	1.8 M.
40	1 1/2	48.6	1/4" x 25	1.8	25	28	8	500	1.8 M.
50	2	60.5	5/16" x 25	1.8	25	28	8	616	1.8 M.
65	2 1/2	76.3	5/16" x 25	2.3	25	28	8	987	1.8 M.
80	3	89.1	5/16" x 25	2.3	25	28	8	965	1.8 M.
100	4	114.3	5/16" x 25	2.3	25	28	8	984	1.8 M.
125	5	139.8	3/8" x 32	3.2	32	36	11	1,400	2.5 M.
150	6	165.2	1/2" x 45	3.2	32	36	11	1,375	2.5 M.
200	8	216.3	1/2" x 45	4.5	38	36	11	2,580	2.5 M.

# SR-19

## SPLIT RING HANGER WITH SWIVEL ADJUSTER

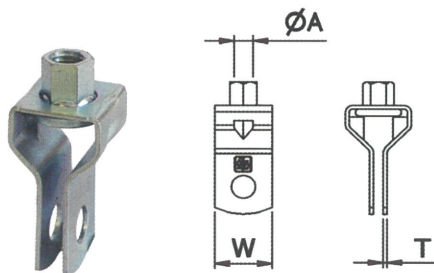


Pipe size (mm.)	Pipe size (inch.)	Rod Size (inch.)	H (mm.)	Brkng Ld/kgs	Recom. span
15	1/2	3/8"	68	500	1.8 M.
20	3/4	3/8"	71	500	1.8 M.
25	1	3/8"	74	500	1.8 M.
32	1 1/4	3/8"	78	500	1.8 M.
40	1 1/2	3/8"	81	500	1.8 M.
50	2	3/8"	87	616	1.8 M.
65	2 1/2	3/8"	95	987	1.8 M.
80	3	3/8"	102	965	1.8 M.
100	4	3/8"	114	984	1.8 M.
125	5	1/2"	140	1,400	2.5 M.
150	6	1/2"	153	1,375	2.5 M.
200	8	5/8"	180	2,580	2.5 M.

# ACCESSORIES

## SR-9

### SWIVEL ADJUSTER



Rod Size (inch)	Steel Size t (mm.)	Steel Size w (mm.)	Brkng. Ld/Kgs.	Recom. Ld/kgs.
3/8	1.6	24	1,254	350
1/2	2.3	32	2,230	500
5/8	3.2	50	4,200	840

## TR

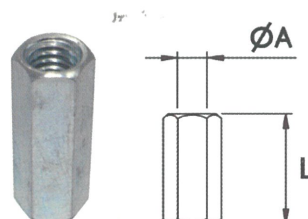
### CONTINUOUS THREADED ROD



Size (inch.)	Length (mm.)
1/4	1,000
1/4	1,500
3/8	1,000
3/8	1,500
1/2	1,000
1/2	1,500
5/8	1,000
5/8	1,500

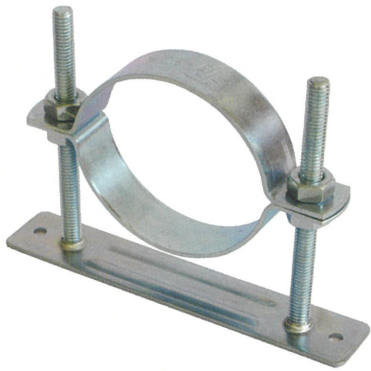
## RC

### ROD COUPLING



Size (inch.)	Length (mm.)
3/8	40
1/2	40
5/8	50

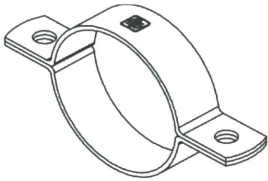
# ADJUSTABLE SPLIT RING WITH STAND



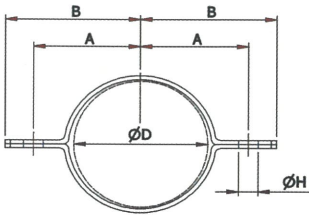
## SSP

FOR PVC AND STEEL PIPES

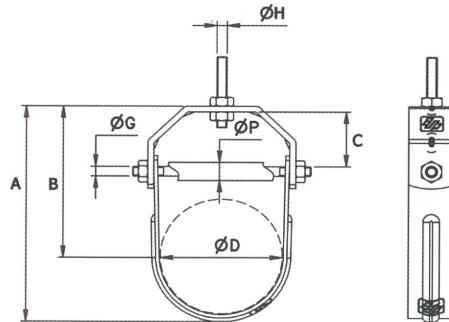
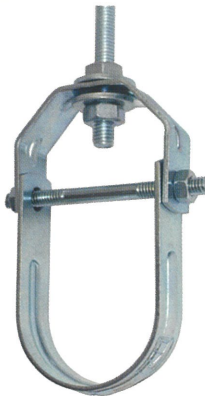
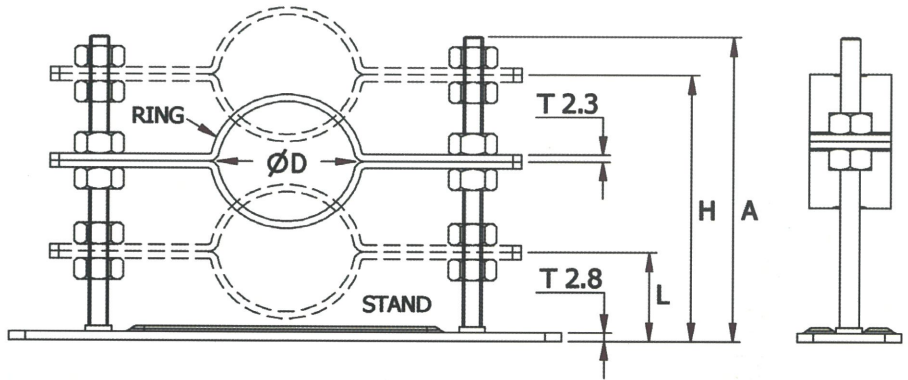
Pipe Size	H	32A	40A	50A	65A	80A	100A
120L		30-110	33-110	39-110	47-110	53-110	62-110
150L		30-140	33-140	39-140	47-140	53-140	62-140
<b>Stand Size</b>		170	170	170	170	170	205



## SP



\* ADJUSTABLE BY NUTS

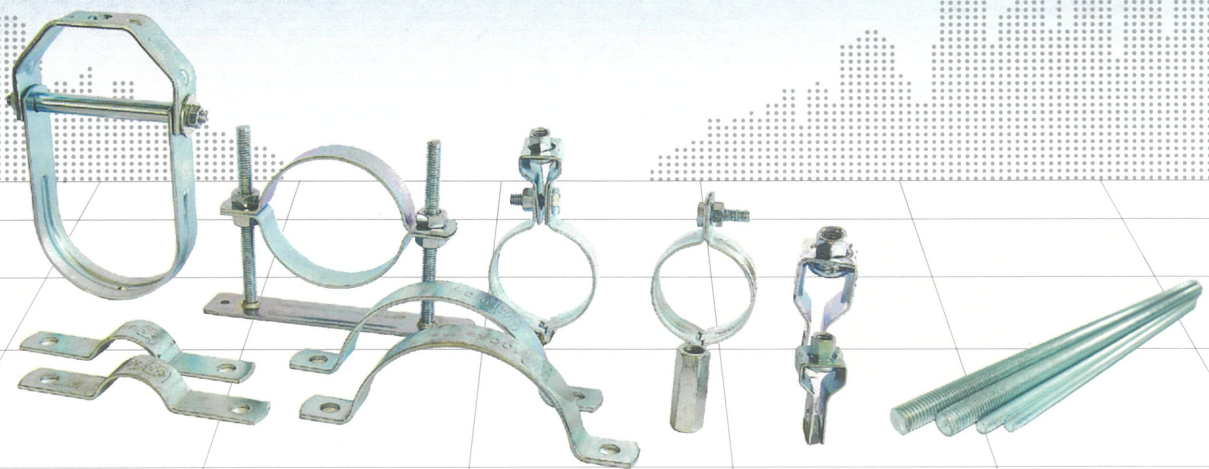
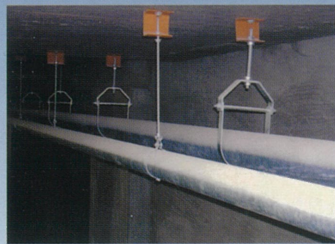
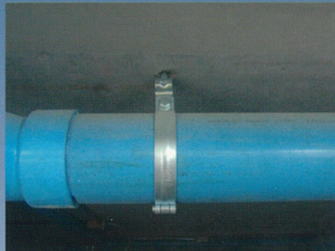


## SC

STANDARD CLEVIS HANGER

Material : Hot-Rolled STEEL Finish : Electro-Zinc or Hot-Dipped Galvanized	Pipe Size (inch)	Hanger ID Ø D (mm.)	A (mm.)	B (mm.)	C (mm.)	Rod Size Ø D (mm.)	Material Size		Tube Ø P (mm.)	Ø G (mm.)
							Upper (mm.)	Lower (mm.)		
	1/2	20	69.5	56	19.5	3/8"	25 x 2.5	25 x 2.0	-	1/4"
	3/4	30	87.5	70	30	3/8"	25 x 2.5	25 x 2.0	-	1/4"
	1	39	95.5	72.5	30.5	3/8"	25 x 2.5	25 x 2.0	-	1/4"
	1 1/4	46	103	76	30.5	3/8"	25 x 2.5	25 x 2.3	-	1/4"
	1 1/2	52	114	84.5	35	3/8"	25 x 2.5	25 x 2.3	-	5/16"
	2	66	128	95	38.5	3/8"	25 x 2.5	25 x 2.3	-	5/16"
	2 1/2	82	147	106	36	1/2"	30 x 4.0	30 x 2.5	12.7	5/16"
	3	90	177.5	132.5	44	1/2"	30 x 4.0	30 x 2.5	12.7	5/16"
	4	120	206.5	146.5	52.5	1/2"	30 x 4.0	30 x 2.5	12.7	3/8"
	5	146	257	184	65.5	5/8"	30 x 5.0	32 x 4.0	15.9	1/2"
	6	172	302	216	88	5/8"	38 x 5.0	38 x 4.0	15.9	1/2"
	8	222	385	274	101.5	5/8"	38 x 9.0	38 x 5.0	15.9	1/2"
	10	274	451	324	118.5	7/8"	50 x 9.0	50 x 6.0	22.2	3/4"
	12	324	534	372	145	7/8"	50 x 9.0	50 x 6.0	22.2	3/4"
	14	360	586	406	145	7/8"	50 x 12	50 x 6.0	22.2	3/4"





**B.S.P. PRODUCTS CO.,LTD.**

248 Bangbon 1 Road, Klongbangpan, Bangbon, Bangkok 10150 Thailand  
[www.bspproducts.com](http://www.bspproducts.com), e-mail : [info@bspproducts.com](mailto:info@bspproducts.com)

บริษัท บี.เอส.พี. โปรดักส์ จำกัด

เลขที่ 248 ถนนบางบอน 1 แขวงคลองบางพราน เขตบางบอน กรุงเทพฯ 10150

TEL : +66(0) 2409 2879 FAX : +66(0) 2409 2878

[www.bspproducts.com](http://www.bspproducts.com), e-mail : [info@bspproducts.com](mailto:info@bspproducts.com)